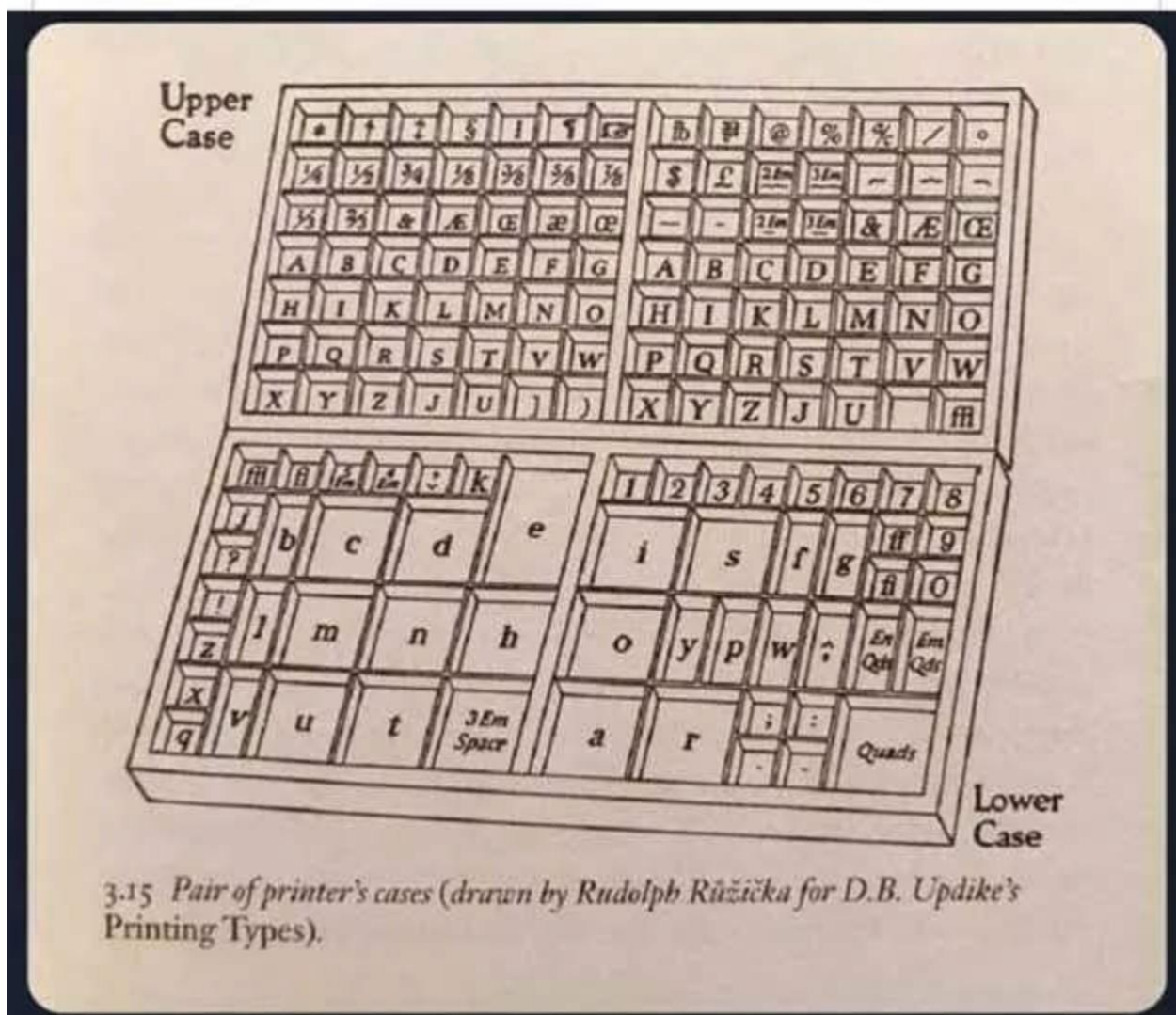


Definition of "Upper Case" (capital letters) and "Lower Case" (small letters)

Did you know that "upper case" and "lower case" refer to the physical cases where printers kept their letters?



Note the larger subdivisions for more common letters (especially vowels) and the smaller ones for less common letters (z, q, x). Also note that there is a special character for --ff.

Thanks to Oded Lerner for sending this